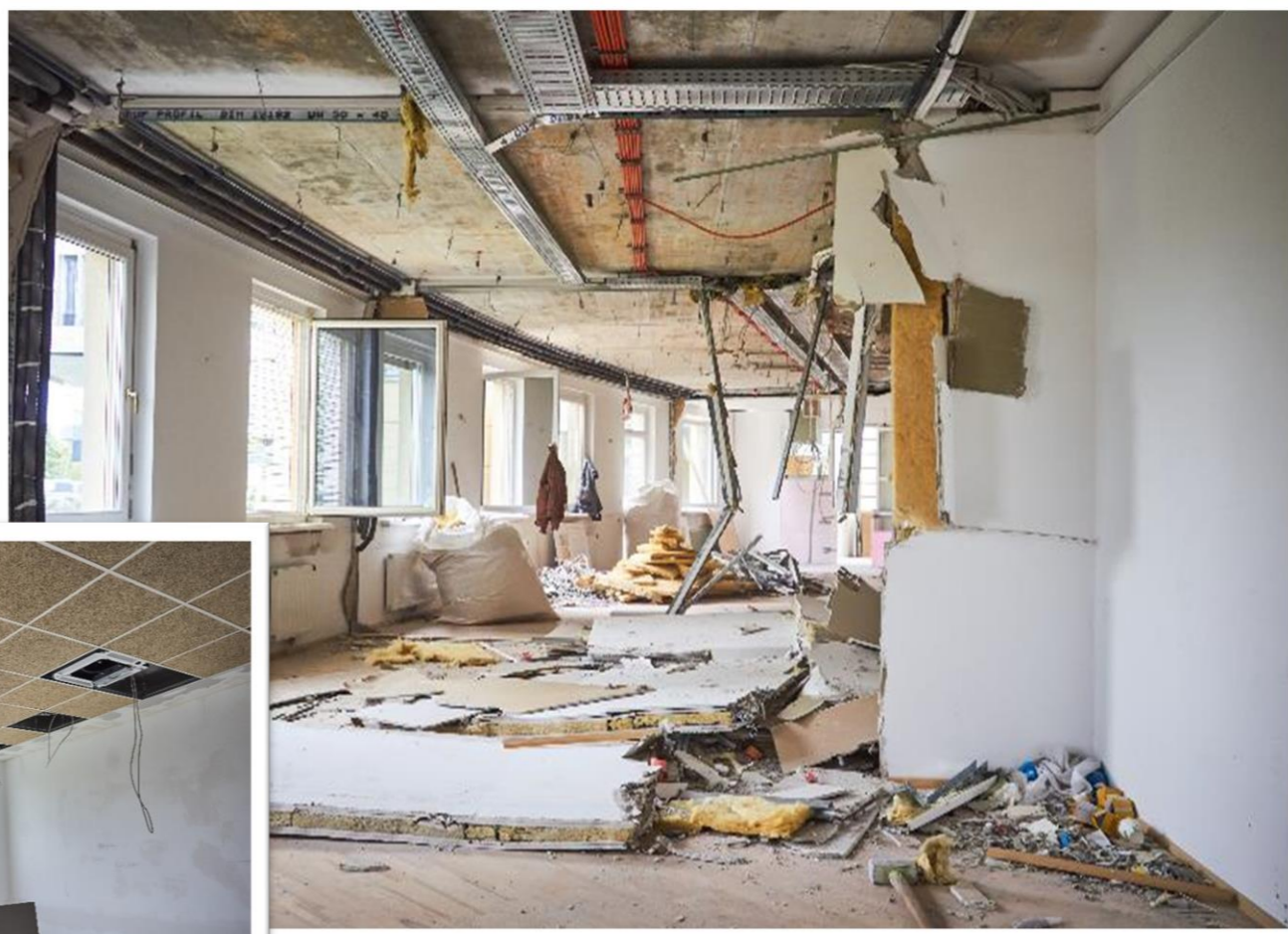
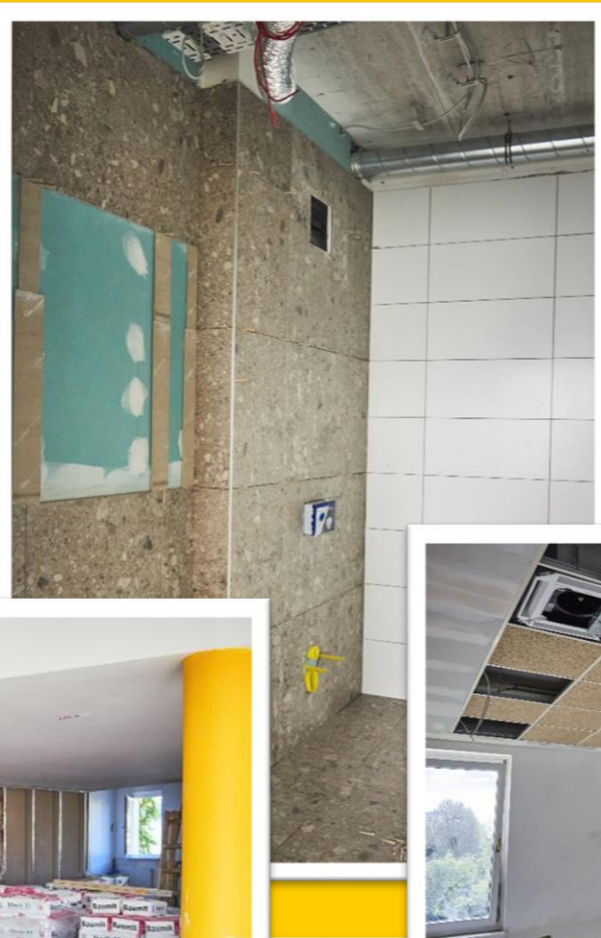
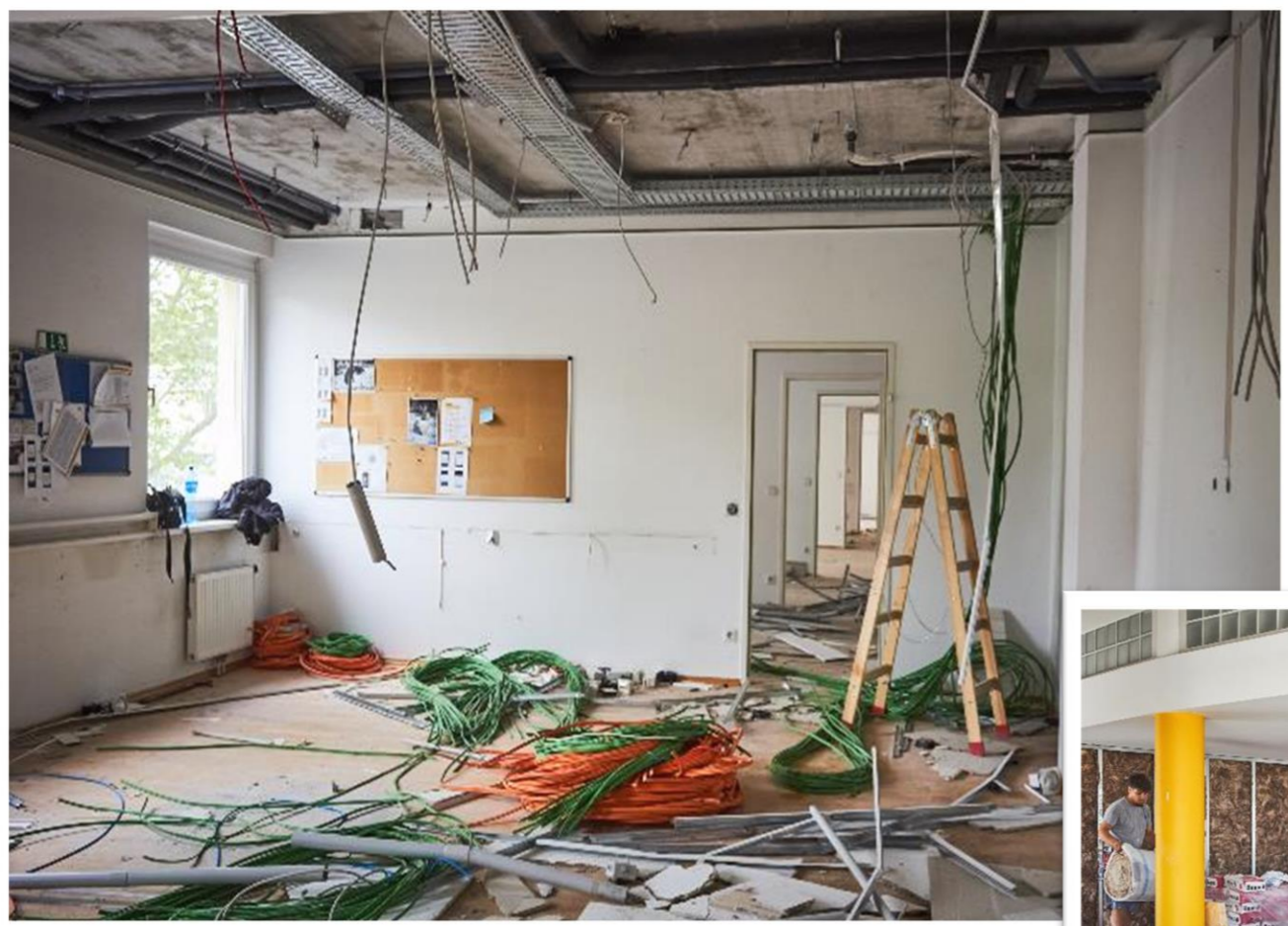
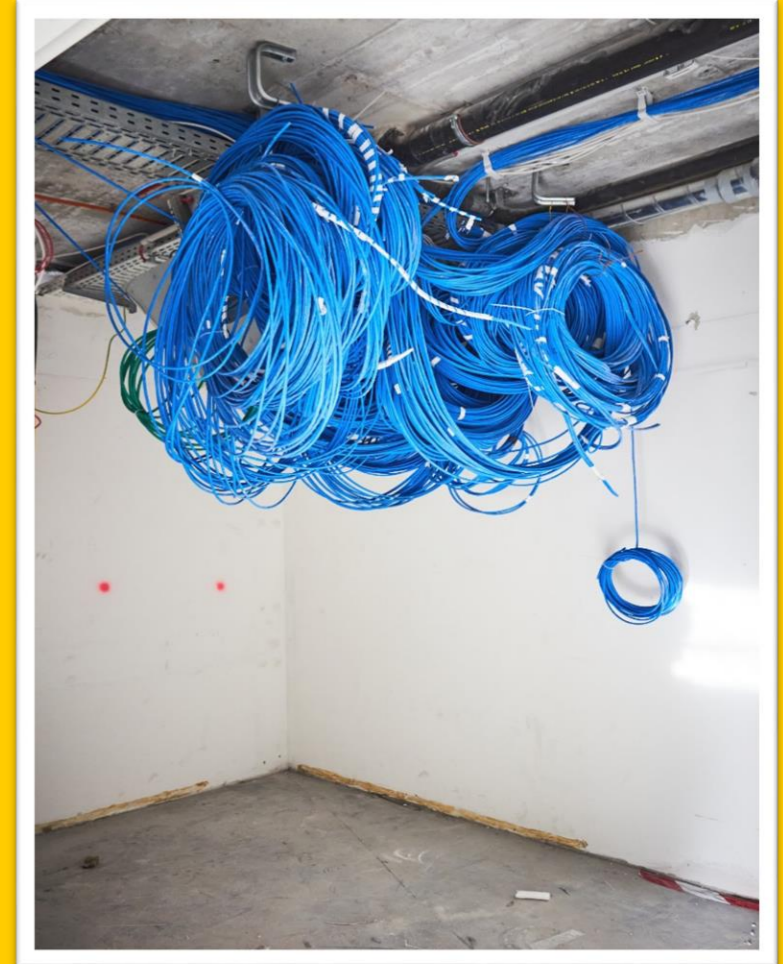
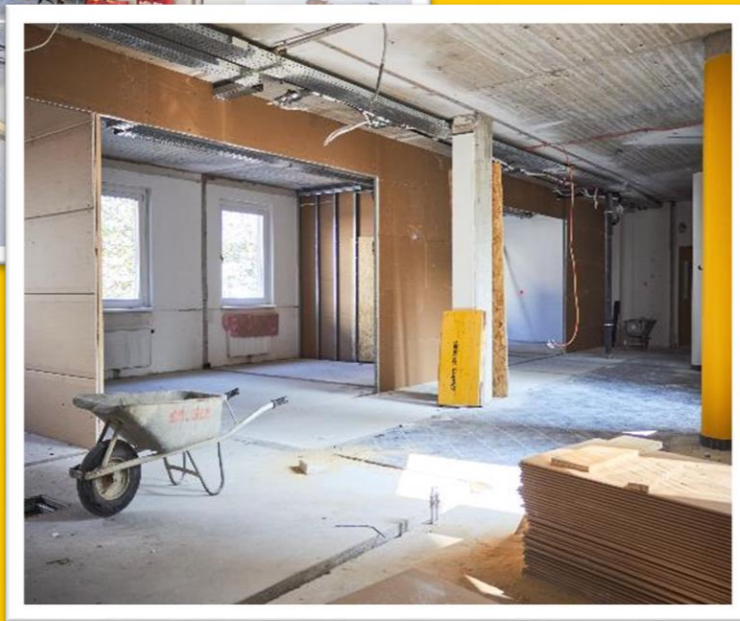
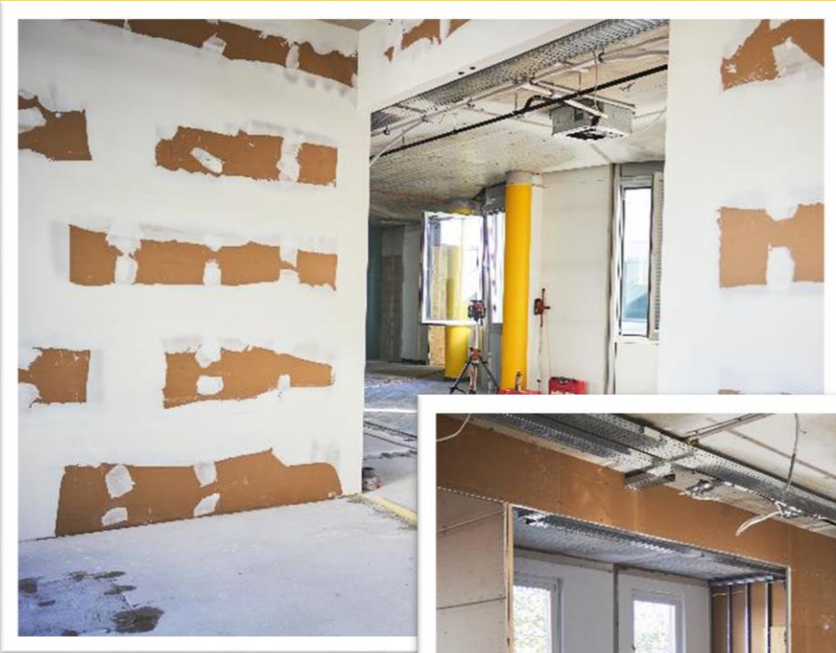
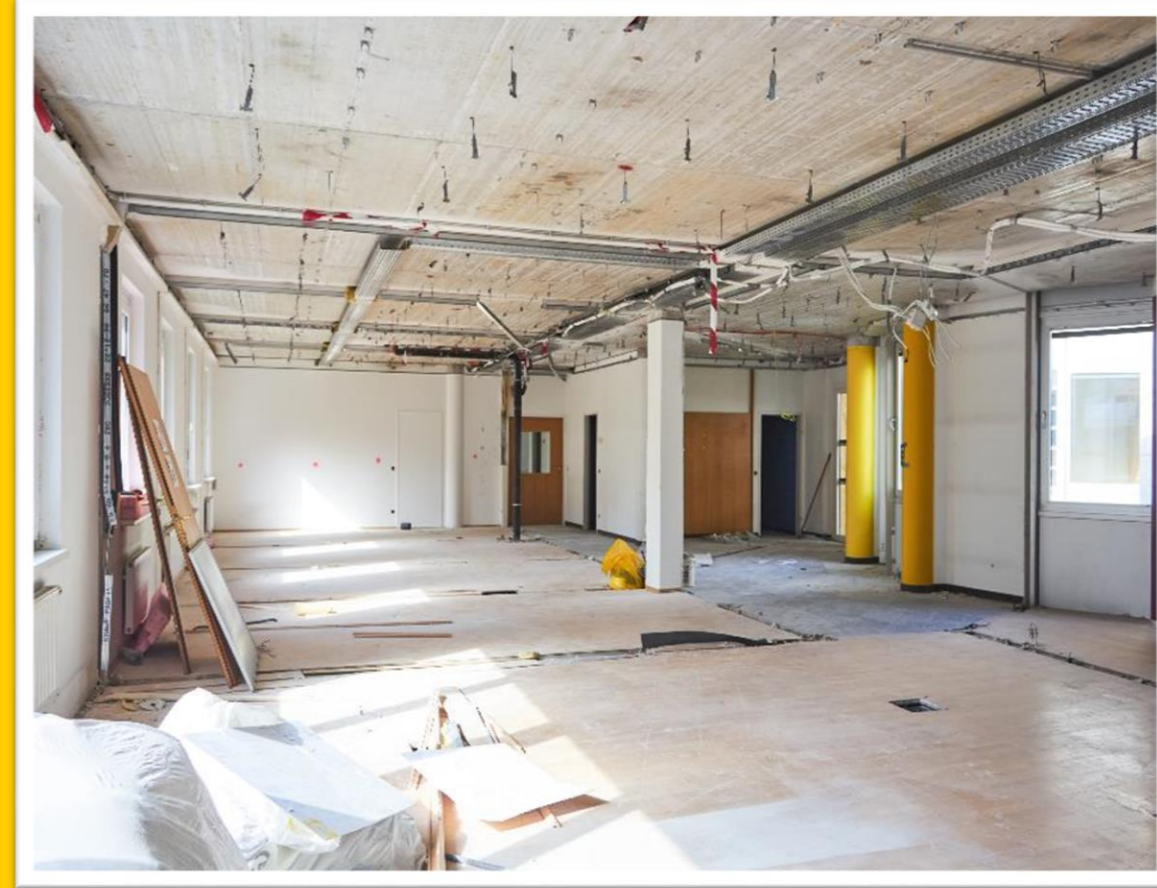
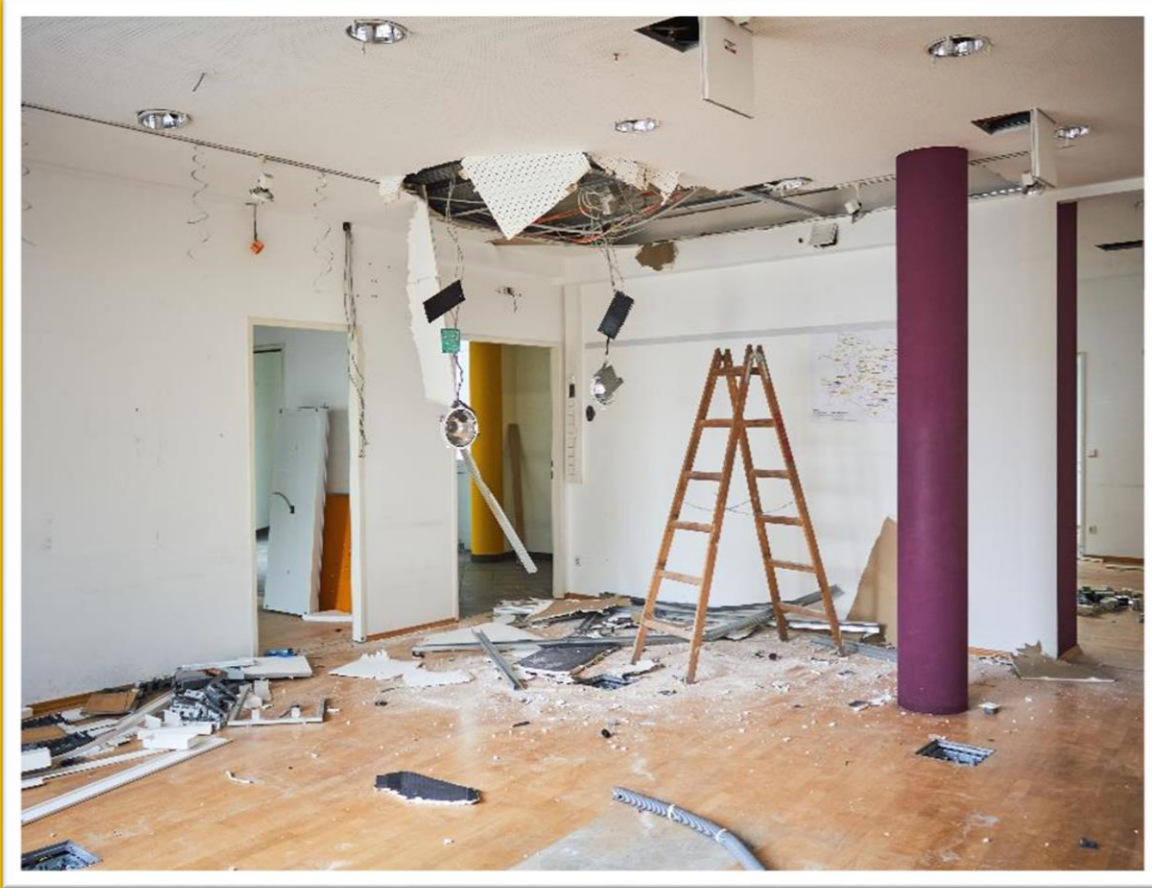


Neues Arbeiten in neuen Räumen

Informationen
zur Neugestaltung

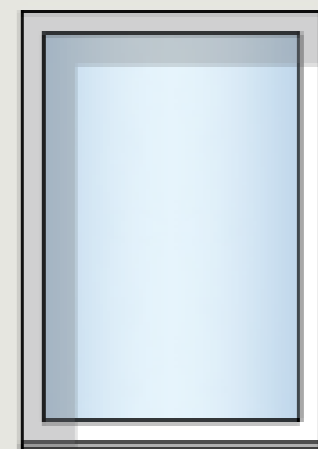
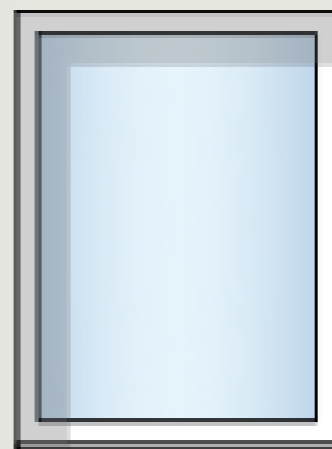
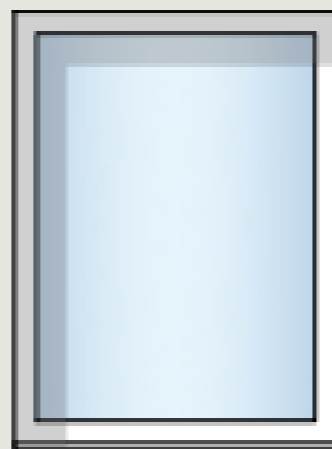




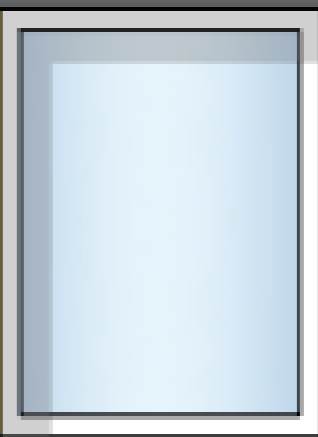
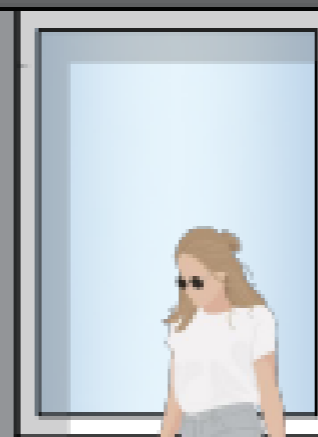
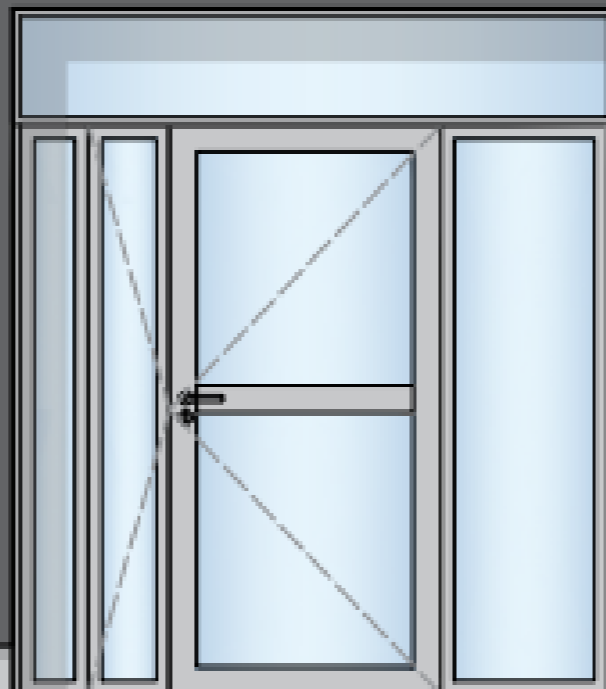


Die Hilfswerk NÖ Landesgeschäftsstelle.





Der Zutritt.



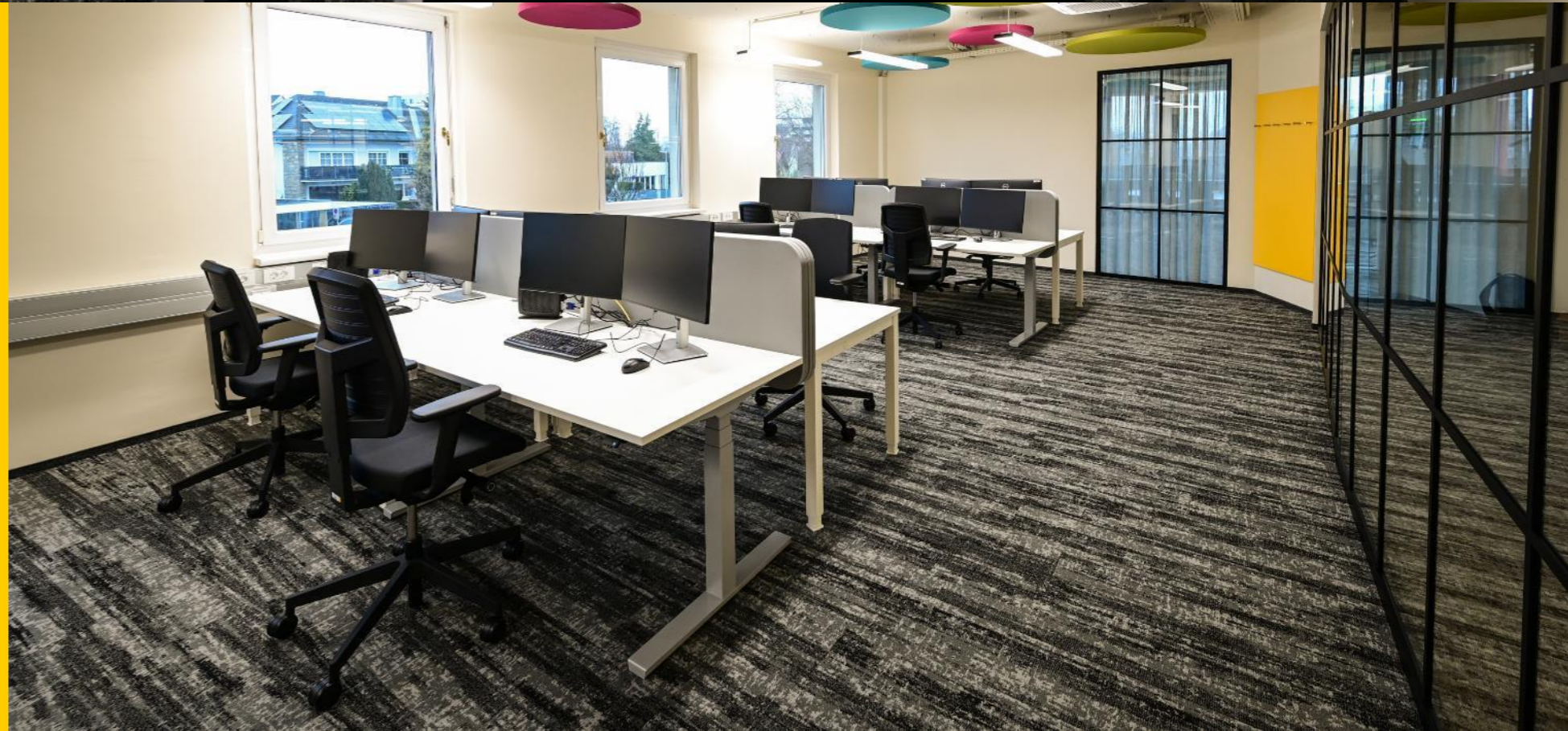


Der Arbeitsplatz.



Der Arbeitsplatz.

- Clean-Desk-Policy
- „Home-Base“ für jeden Bereich



The image shows a modern, minimalist standing cafe. On the left, a long, dark wood countertop is supported by a black metal frame. Behind the counter, there are dark wood cabinets and a coffee machine. In the center, a glass partition with a black frame and a menu board is visible. To the right, there are three high, round wooden tables on black metal stands. Along the right wall, there is a long, low, orange-cushioned bench. The floor is made of light-colored wood in a herringbone pattern. The ceiling has a grid of acoustic tiles with recessed lighting and a curved light fixture. Two windows are visible, providing natural light and a view of the outdoors.

Das Steh-Café.



Das Steh-Café.

- Zum Austausch für Mitarbeiter*innen
- Mülltrennung
- „Servierwagen“ für Besprechungen



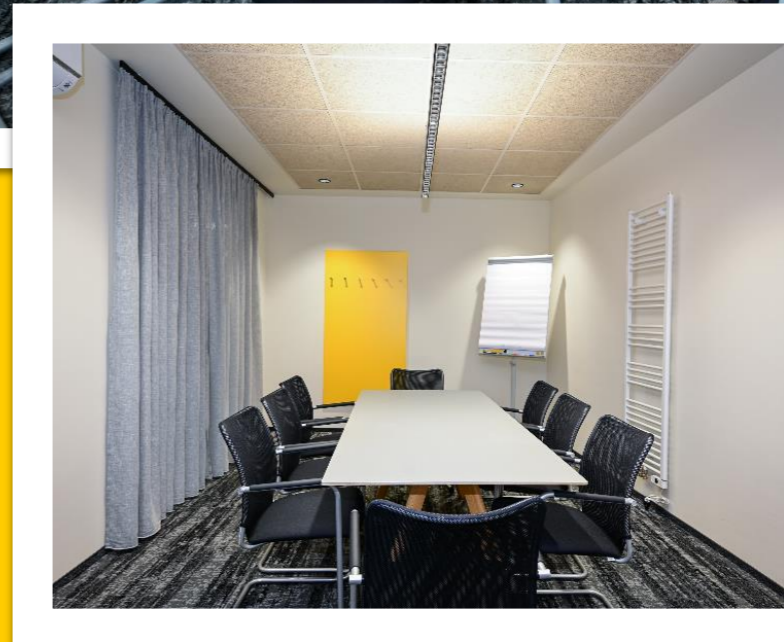
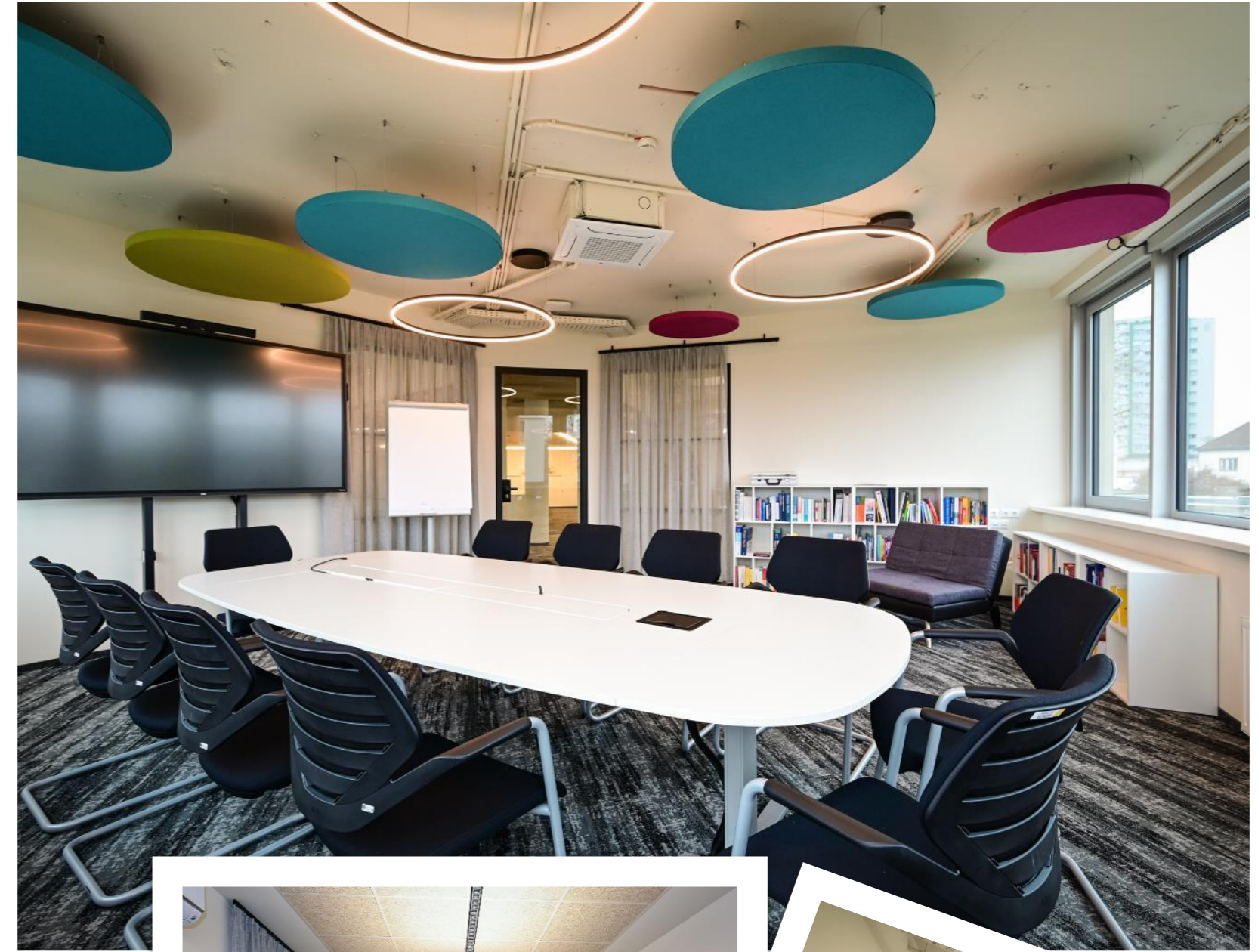
Das Bistro.



Das Bistro.

- Gemeinsame Mittagspause
- Gastro-Ausstattung





Seminar/Besprechungsraum

- Moderne, flexible Ausstattung



Die Call-Box.

Für Online-Meetings oder vertrauliche Telefonate

A modern lounge area featuring a mix of teal and orange upholstered furniture. There is a teal sofa on the left, an orange sofa on the right, and several armchairs in both colors. A black round coffee table sits in the center with a magazine on it. A black floor lamp stands in the background. The room has a patterned rug and a white wall with a slanted wooden ceiling.

Die Lounge.

Wartebereich für Besucher*innen

A photograph of a modern building's terrace. The terrace is paved with light-colored, square tiles. On the left, there is a low wall with a dark countertop and a black trash bin. In the background, a multi-story building with large glass windows and balconies is visible. To the left of the building, there is a grassy area with bare trees and a bridge in the distance. The sky is overcast.

Die Terrasse.

Lounge-Möbel im Sommer zum Austausch



Die Garderobe.

Spind für jede/n Mitarbeiter*in



Die DIY-Station.

Drucken & Büromaterial



Der Stauraum.

- verschließbare Schränke je Bereich
- Flex-Tisch zum Ordner-Transport

